

1 CUT CONE TO EXACT CORRESPONDING PIPE DIAMETER.

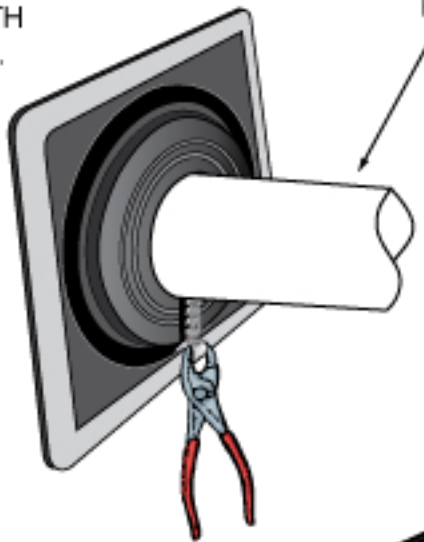


2 SPLIT SHOULDERS WITH SCISSORS



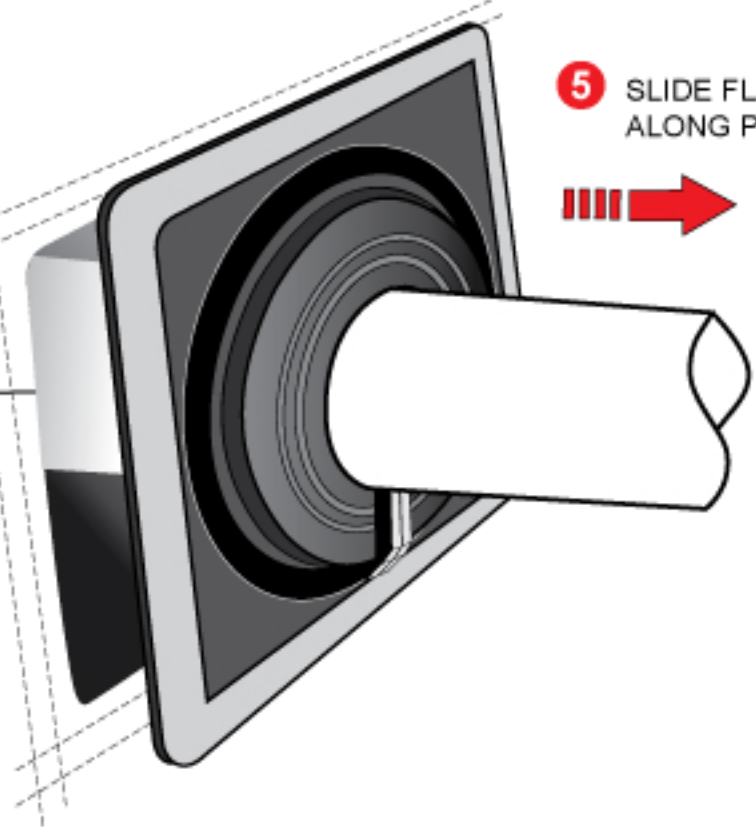
STEPS 2 & 3 ONLY IF RETRO-FITTING

3 CRIMP FLASHING SHOULDERS WITH RETROFIT CLIPS. FACE JOINT DOWNSTREAM.



WHEN SLIDING FLASHING ALONG PIPE, LUBRICATE PIPE WITH WATER.

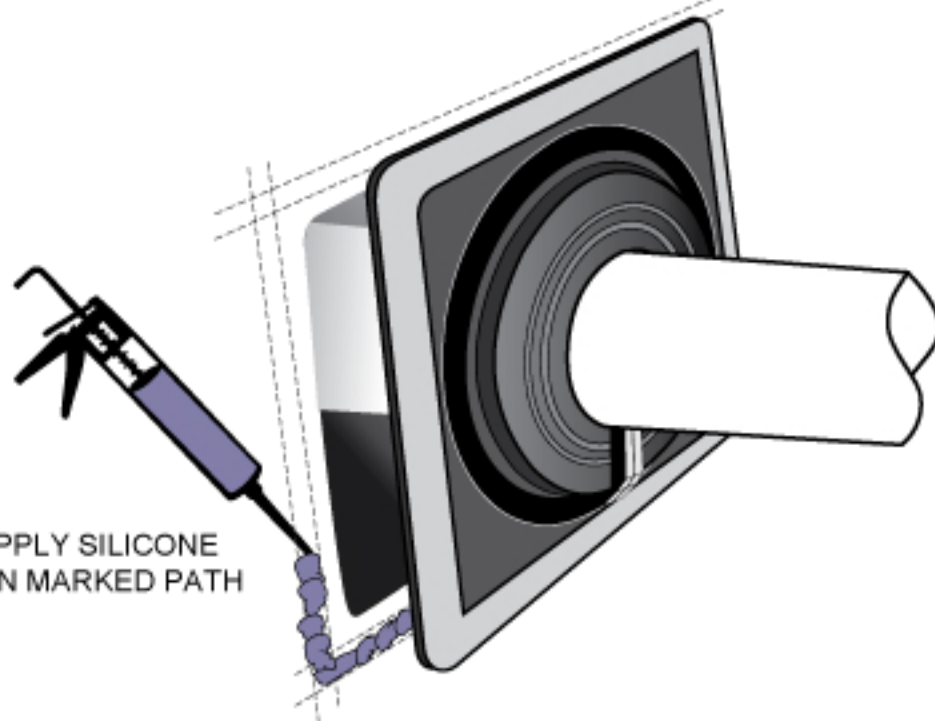
4 MARK OUT SILICONE PATHS



5 SLIDE FLASHING ALONG PIPE



6 APPLY SILICONE ON MARKED PATH



7 REALIGN FLASHING ONTO WALL AND FIX WITH APPROPRIATE FASTENERS. START HERE.

